

## *Catalog*

---

LED FLUSH MOUNT	01-06
LED SENSOR LIGHT	07
BATTERY BACK-UP LED CEILING LIGHT	08
LED FLUSH MOUNT	09-10
DECORATIVE LED LIGHT	11
LED FLUSH MOUNT	12-17
LED SLIM PANEL LIGHT	18-19
LED PIR LIGHT	20
LED SLIM PANEL LIGHT	21
LED PANEL LIGHT	22
LED SLIM PANEL LIGHT	23
LED PANEL LIGHT	24-27
LED DISK LIGHT	28-29
LED RETROFIT DOWNLIGHT	30-31
LED LIGHT ENGINE	32-33
CCT TUNABLE LED LIGHT ENGINE	34

## *Catalog*

---

LED FLUSH MOUNT	01-17
LED SLIM PANEL LIGHT(Round)	18-22
LED PANEL LIGHT(Square)	23-27
LED DISK LIGHT	28-29
LED RETROFIT DOWNLIGHT	30-31
LED LIGHT ENGINE	32-34



# LED FLUSH MOUNT



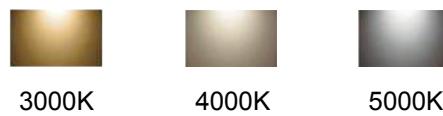

  
 CEC T-24 JA8-2016-E 100%-10%  
 UL file#E483573

3CCT Adjustable



## Features

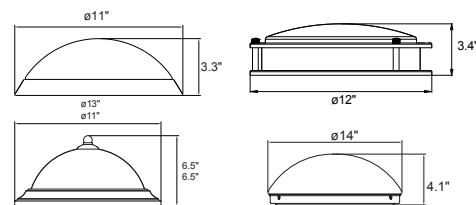
- All the products certificated by UL/cUL, Energy Star etc.
- Driver on Board LED light Engines
- 120V input, 50/60Hz
- PF>0.9
- Damp Location
- CRI 80 or 90 optional
- Multiple LED array for uniform illumination
- Color temperature tunable 3000K/4000K/5000K
- Ambient temperature:-20°C to 45°C
- Triac dimming of 100%-10%
- 5 years or 50,000 hour non-prorated warranty



## Benefits

- Ideal replacement for traditional fixtures
- NO UV or IR radiation
- Low flicker and noise free
- No bulb replacement required

## Product Dimension



## Product Specification

Model Number	Wattage	Lumen	Diameter	Height	CRI	Dimmable
ECO-WOR-CECY11CT2CTDOB	18W	1350	11"	6.5"	80/90	Yes
ECO-WOR-CECY13CT2CTDOB	25W	1875	13"	6.5"	80/90	Yes
ECO-WOR-CECY11HBTk2CT15DOB18W		1350	11"	3.7"	80/90	Yes
ECO-WOR-CECY13HBTk2CT15DOB25W		1875	13"	6.5"	80/90	Yes
ECO-WOR-CECY112CTDOB	18W	1350	11"	3.8"	80/90	Yes
ECO-WOR-CECY142CTDOB	25W	1875	14"	4.1"	80/90	Yes
ECO-WOR-CEDC102CT15DOB	18W	1260	10"	3.4"	80/90	Yes
ECO-WOR-CEDC122CT20DOB	18W	1260	12"	3.4"	80/90	Yes
ECO-WOR-CEDC142CT25DOB	25W	1750	14"	3.9"	80/90	Yes

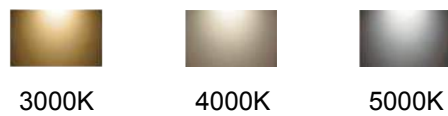
NEW

# LED FLUSH MOUNT




  
 CEC T-24 JA8-2016-E 100%-10%

## 3CCT Adjustable (Round) 3 in 1



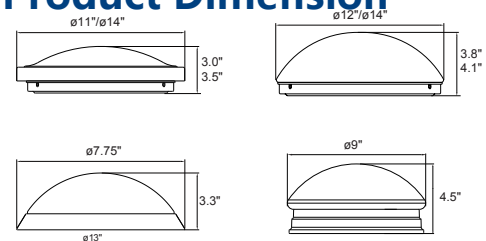
### Features

- All the products certificated by ETL/cETL, Energy Star etc.
- Driver on Board LED light Engines
- 120V input, 50/60Hz
- PF>0.9
- Damp Location
- CRI 80 or 90 optional
- Multiple LED array for uniform illumination
- Color temperature tunable 3000K/4000K/5000K
- Ambient temperature:-20°C to 45°C
- Triac dimming of 100%-10%
- 5 years or 50,000 hour non-prorated warranty

### Benefits

- Ideal replacement for traditional fixtures
- NO UV or IR radiation
- Low flicker and noise free
- No bulb replacement required

### Product Dimension



### Product Specification

Model Number	Wattage	Lumen	Diameter	Height	CRI	Dimmable
ECO-WOR-CY12CCTW2PP	15W	1200	12"	3.0"	80/90	Yes
ECO-WOR-CY14CCTW2PP	25W	1850	14"	3.5"	80/90	Yes
ECO-WOR-CY12CCTW2PP	15W	1100	12"	3.7"	80/90	Yes
ECO-WOR-CY14CCTW2PP	25W	1800	14"	6.5"	80/90	Yes
ECO-WOR-CY775CCTW2PP	12W	1000	7.75"	3.3"	80/90	Yes
ECO-WOR-CY09CCTW2PP	15W	1200	9"	4.5"	80/90	Yes
ECO-WOR-CY09CCTW2PP	15W	1200	9"	4.5"	80/90	Yes
ECO-WOR-CY08CCTW2PP	12W	1000	8"	3.3"	80/90	Yes

# LED FLUSH MOUNT

## 3CCT Adjustable (Square) 3 in 1



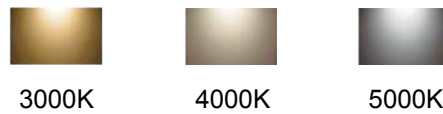
JBF 11" & 14"



12" & 16"

### Features

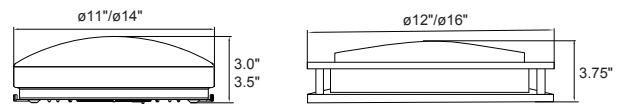
- All the products certificated by ETL/cETL, Energy Star etc.
- Driver on Board LED light Engines
- 120V input, 50/60Hz
- PF>0.9
- Damp Location
- CRI 80 or 90 optional
- Multiple LED array for uniform illumination
- Color temperature tunable 3000K/4000K/5000K
- Ambient temperature:-20°C to 45°C
- Triac dimming of 100%-10%
- 5 years or 50,000 hour non-prorated warranty



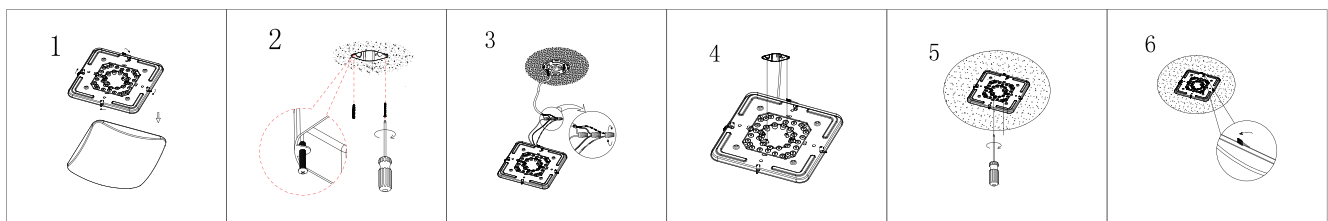
### Benefits

- Ideal replacement for traditional fixtures
- NO UV or IR radiation
- Low flicker and noise free
- No bulb replacement required

### Product Dimension



### Installation Steps



### Product Specification

Model Number	Wattage	Lumen	Diameter	Height	CRI	Dimmable
ECO-WOR-CS11CCTW2PP	15W	1050	11"	3.0"	80/90	Yes
ECO-WOR-CS14CCTW2PP	25W	1750	14"	3.5"	80/90	Yes
ECO-WOR-CS12CCTW2PP	15W	1200	12"	3.8"	80/90	Yes
ECO-WOR-CS16CCTW2PP	25W	1800	16"	3.8"	80/90	Yes

# LED FLUSH MOUNT

**FCIC** ENERGY STAR LISTED DIM  
 CEC T-24 JA8-2016-E 100%-10%  
 UL file#E483573

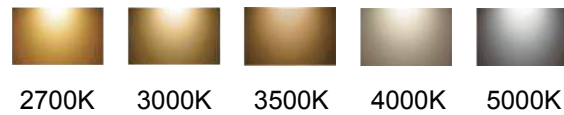
NEW

## 5CCT Adjustable



## Features

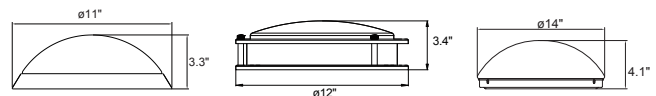
- All the products certificated by UL/cUL, Energy Star etc.
- Driver on Board LED light Engines
- 120V input, 50/60Hz
- PF>0.9
- Damp Location
- CRI 80 or 90 optional
- Multiple LED array for uniform illumination
- Color temperature tunable 2700K/3000K/3500K/4000K/5000K
- Ambient temperature:-20°C to 45°C
- Triac dimming of 100%-10%
- 5 years or 50,000 hour non-prorated warranty



## Benefits

- Ideal replacement for traditional fixtures
- NO UV or IR radiation
- Low flicker and noise free
- No bulb replacement required

## Product Dimension



## Product Specification

Model Number	Wattage	Lumen	Diameter	Height	CRI	Dimmable
ECO-WOR-CEDC105CT15DOB	15W	1050	10"	3.4 "	80/90	Yes
ECO-WOR-CEDC125CT15DOB	15W	1050	12"	3.4"	80/90	Yes
ECO-WOR-CEDC145CT25DOB	25W	1750	14"	3.9"	80/90	Yes
ECO-WOR-CECY145CT25DOB	25W	1875	14"	4.1"	80/90	Yes
ECO-WOR-CEDC165CT25DOB	25W	1875	16"	4.0"	80/90	Yes
ECO-WOR-CECY115CTDOB	15W	1125	11"	3.0"	80/90	Yes
ECO-WOR-CECY145CTDOB	25W	1850	14"	4.1"	80/90	Yes

NEW

# LED FLUSH MOUNT

**FCIC**     
 CEC T-24 JA8-2016-E 100%-10%  
 UL file#E483573

## Warm to Dim



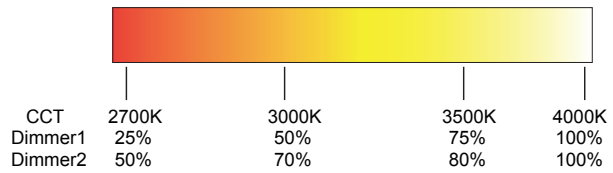
### Features

- All the products certificated by UL/cUL, Energy Star etc.
- Driver on Board LED light Engines
- 120V input, 50/60Hz
- PF>0.9
- Damp Location
- CRI 80 or 90 optional
- Ambient temperature:-20°C to 45°C
- Triac dimming of 100%-10%
- 5 years or 50,000 hour non-prorated warranty

### Benefits

- Ideal replacement for traditional fixtures
- NO UV or IR radiation
- Low flicker and noise free
- No bulb replacement required

Warm Dimming Sample



## Product Specification

	WOR-CE00DC12DTWG3DOB	WOR-CE00DC12DTWG3DOB	WOR-CE00DC14DTWG3DOB	WOR-CE00DC16DTWG3DOB
Input Voltage	120V / 60HZ			
Wattage	15W	15W	25W	25W
Lumen	1125@4000K	1050@4000K	1750@4000K	1750@4000K
Light Efficiency	70	70	70	70
CCT @ 2700K	25% or 40%			
CCT @ 3000K	50% or 70%			
CCT @ 3500K	75% or 80%			
CCT @ 4000K	100%			
Power Factor	>0.90			
Dimension	ø11"x3.8"	ø12"x3.4"	ø14"x3.9"	ø16"x4.0"
CRI	80 or 90 options			

# LED FLUSH MOUNT

## Warm to Dim



JBF 11" & 14"



12" & 16"

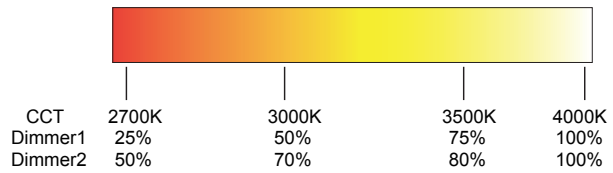
### Features

- All the products certificated by ETL/cETL, Energy Star etc.
- Driver on Board LED light Engines
- 120V input, 50/60Hz
- PF>0.9
- Damp Location
- CRI 80 or 90 optional
- Ambient temperature:-20°C to 45°C
- Triac dimming of 100%-10%
- 5 years or 50,000 hour non-prorated warranty

### Benefits

- Ideal replacement for traditional fixtures
- NO UV or IR radiation
- Low flicker and noise free
- No bulb replacement required

#### Warm Dimming Sample



### Product Specification

	ECO-WOR-CS11DTWPP	ECO-WOR-CS12DTWPP	ECO-WOR-CS14DTWPP	ECO-WOR-CS16DTWPP
Input Voltage	120V / 60HZ			
Wattage	15W	15W	25W	25W
Lumen	1125@4000K	1050@4000K	1750@4000K	1750@4000K
Light Efficiency	70	70	70	70
CCT @ 2700K	25% or 40%			
CCT @ 3000K	50% or 70%			
CCT @ 3500K	75% or 80%			
CCT @ 4000K	100%			
Power Factor	>0.90			
Dimension	ø11"x3.8"	ø12"x3.8"	ø14"x3.9"	ø16"x3.8"
CRI	80 or 90 options			



# LED SENSOR LIGHT

**FCIC**    
**CEC T-24 JA8-2016-E**  
 UL file#E483573

## Microwave Sensor



### Detection area

Detection area can be reduced by selecting the combination on the DIP switches to fit precisely for each specific application.

### Hold-time

Hold-time means the time period you would like to keep the lamp on 100% after the person has left the detection area.

### Daylight sensor

The daylight threshold can be set on DIP switches, to fit for particular application.

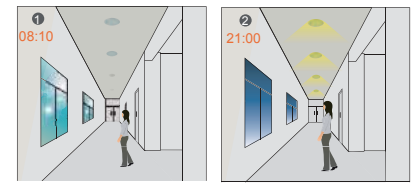
### Operating mode

This is the time period you would like to keep at the low light output level(10%-15% in brightness) before it is completely switched off in the long absence of people.

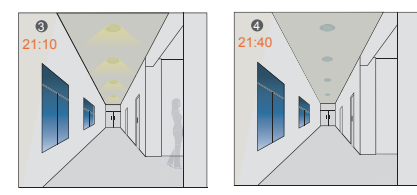
Note: "0s" means on/off control;

"+" means bi-level control, fixture never switches off.

Note: all settings can be tailor-made according to customer request.



When motion detected, but sufficient daylight, light remains OFF. When motion detected, insufficient daylight, light ON.



After last detection, the light will be dimmed down to the stand-by dimming level(10%,20%,30%or 50%). After the stand-by period, light OFF.

	1	2			3	4			
I	ON	ON	100%	I - 100%	I	ON	ON	5s	I - 5s
II	-	ON	75%	II - 75%	II	-	ON	90s	II - 90s
III	ON	-	50%	III - 50%	III	ON	-	3min	III - 3min
IV	-	-	25%	IV - 25%	IV	-	-	10min	IV - 10min

	5	6			7	8			
I	ON	ON	+∞	I - +∞	I	ON	ON	0s	I - 0s
II	-	ON	50Lux	II - 50Lu x	II	-	ON	30s	II - 30s
III	ON	-	15Lux	III - 15Lu x	III	ON	-	10min	III - 10min
IV	-	-	5 Lux	IV - 5Lu x	IV	-	-	+∞	IV - +∞

### Product Specification

Model Number	Wattage	Lumen	Diameter	Height	CCT	CRI
ECO-WOR-CE00CYHBMWDOB	15W	1125	11"	3.3"	2700K-5000K	80/90
ECO-WOR-CE00CY11MWDOB	15W	1125	11"	3.8"	2700K-5000K	80/90
ECO-WOR-CE00CY14MWDOB	25W	1875	14"	3.5"	2700K-5000K	80/90
ECO-WOR-CE00DC10MWDOB	15W	1050	10"	3.4"	2700K-5000K	80/90
ECO-WOR-CE00DC12MWDOB	15W	1050	12"	3.4"	2700K-5000K	80/90
ECO-WOR-CE00DC14MWDOB	25W	1750	14"	3.9"	3000K-5000K	80/90
ECO-WOR-CE00DC16MWDOB	25W	1750	16"	4.0"	3000K-5000K	80/90




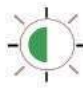
NEW

# LED FLUSH MOUNT

**FC IC**      
 CEC T-24 JA8-2016-E 100%-10%  
 UL file#E483573

## Emergency Backup



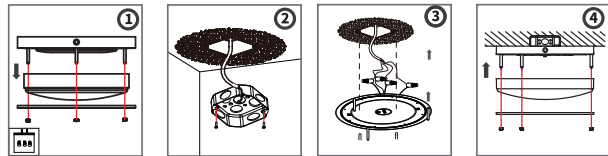
	<b>It is in charging</b> when indicator light is in red		<b>It is full charged</b> when indicator light in green
	<b>It is Monthly inspection automatically</b> when indicator light in 1Hz green flashing		<b>It is annual inspection automatically</b> when indicator light in 3Hz green flashing

## Features

- Driver on Board LED light Engines
- 120V input, 50/60Hz
- PF>0.9
- Damp Location
- CRI 80 or 90 optional
- Ambient temperature:-20°C to 45°C
- Triac dimming of 100%-10%

## Operation mode

- When full power is 25w, Backup Power is 12w -15w Sustain time >100mins
- When full power is 15w, Backup Power is 8w Sustain time >100mins
- Fast installation



## Product Specification

	FLUSH MOUNT LIGHT	FLUSH MOUNT LIGHT	FLUSH MOUNT LIGHT	FLUSH MOUNT LIGHT
	10"	12"	14"	16"
Input Voltage	120V / 60HZ			
Wattage	15W	15W	25W	25W
Lumen	1050lm	1050lm	1750lm	1750lm
Light Efficiency	70	70	70	70
Backup time	>100min	>100min	>100min	>100min
Backup power	8W	8W	12W-15W	12W-15W
CCT	2700K~5000K	2700K~5000K	2700K~5000K	2700K~5000K
DIMMABLE	100%~10%			
CRI	80 or 90 options			

# LED FLUSH MOUNT

## Mini Puff



6"



8"



5.75"



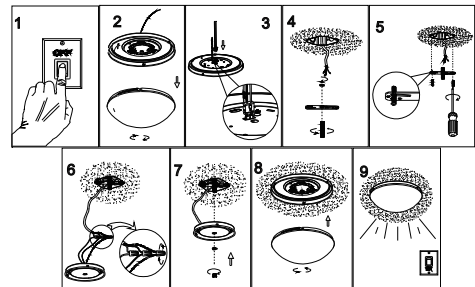
7.75"

### Features

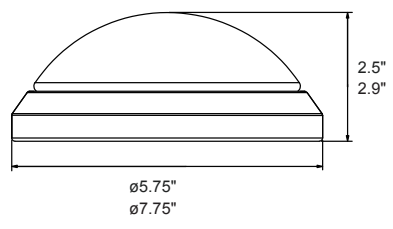
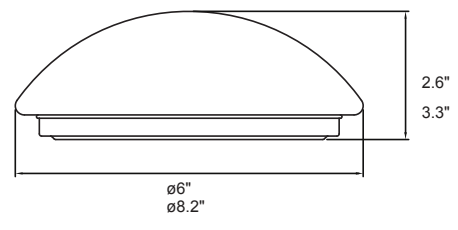
- All the products certificated by UL/cUL, Energy Star etc.
- Driver on Board LED light Engines
- 120V input, 50/60Hz
- PF>0.9
- Damp Location
- CRI 80 or 90 optional
- Ambient temperature:-20°C to 45°C
- Triac dimming of 100%-10%
- 5 year or 50,000 hour non-prorated warranty

### Benefits

- Ideal replacement for traditional fixtures
- NO UV or IR radiation
- Low flicker and noise free
- No bulb replacement required



### Product Dimension



### Product Specification

Model Number	Wattage	Lumen	Diameter	Height	CCT	CRI	Dimmable
ECO-WOR-CE00CY575DOBIML	10W	680	5.75"	2.5"	2700K-5000K	80/90	Yes
ECO-WOR-CE00CY775DOBIML	12W	840	7.75"	2.9"	2700K-5000K	80/90	Yes
ECO-WOR-CE00CY6DOBIML	10W	680	6.00"	2.6"	2700K-5000K	80/90	Yes
ECO-WOR-CE00CY8DOBIML	12W	860	8.20"	3.3"	2700K-5000K	80/90	Yes

# LED FLUSH MOUNT

## Round Series

**HOT**

**FCIC** ENERGY STAR LISTED  
 CEC T-24 JA8-2016-E 100%-10%  
 UL file#E483573



MBG 11"&14"



MBY11"&14"



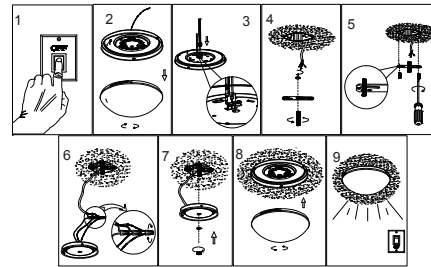
JBY11"&14"

### Features

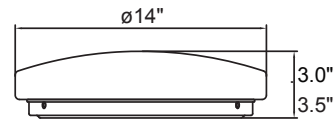
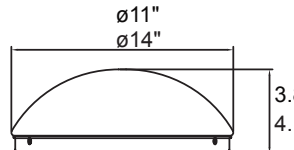
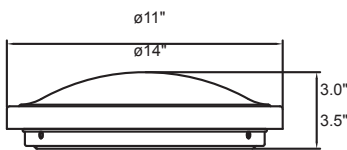
- All the products certificated by UL/cUL, Energy Star etc.
- Driver on Board LED light Engines
- 120V input, 50/60Hz
- PF>0.9
- Damp Location
- CRI 80 or 90 optional
- Ambient temperature:-20°C to 45°C
- Triac dimming of 100%-10%
- 5 years or 50,000 hour non-prorated warranty

### Benefits

- Ideal replacement for traditional fixtures
- NO UV or IR radiation
- Low flicker and noise free
- No bulb replacement required



### Product Dimension



### Product Specification

Model Number	Wattage	Lumen	Diameter	Height	CCT	CRI	Dimmable
ECO-WOR-CE00CY11G3015DOB-MBG 15W		1125	11"	3.0"	2700K-5000K	80/90	Yes
ECO-WOR-CE00CY11G3015DOB-MBY 15W		1125	11"	3.0"	2700K-5000K	80/90	Yes
ECO-WOR-CE00CY11G3015DOB-JBY 15W		1125	11"	3.0"	2700K-5000K	80/90	Yes
ECO-WOR-CE00CY14G3025DOB-MBG 25W		1875	14"	3.5"	2700K-5000K	80/90	Yes
ECO-WOR-CE00CY14G3025DOB-MBY 25W		1875	14"	3.5"	2700K-5000K	80/90	Yes
ECO-WOR-CE00CY14G3025DOB-JBY 25W		1875	14"	3.5"	2700K-5000K	80/90	Yes

# DECORATIVE LED LIGHT

**FCIC**    
 CEC T-24 JA8-2016-E 100%-10%  
 UL file#E483573



## Features

- All the products certificated by UL/cUL, Energy Star etc.
- Driver on Board LED light Engines
- 120V input, 50/60Hz
- PF>0.9
- Damp Location
- CRI 80 or 90 optional
- Ambient temperature:-20°C to 45°C
- Triac dimming of 100%-10%
- 5 years or 50,000 hour non-prorated warranty

## Product Specification

Model Number	Wattage	Lumen	Diameter	Height	CCT	CRI	Dimmable
ECO-WOR-CE00BY12G3DOB	15W	1125	ø12"	5.98"	2700K-6000K	80/90	Yes
ECO-WOR-CE01BY12G3DOB	15W	1125	ø12"	5.98"	2700K-6000K	80/90	Yes
ECO-WOR-CE03BY12G3DOB	15W	1125	ø12"	5.98"	2700K-6000K	80/90	Yes
ECO-WOR-CE00BY15G3DOB	25W	1875	ø15"	5.98"	2700K-6000K	80/90	Yes
ECO-WOR-CE01BY15G3DOB	25W	1875	ø15"	5.98"	2700K-6000K	80/90	Yes
ECO-WOR-CE03BY15G3DOB	25W	1875	ø15"	5.98"	2700K-6000K	80/90	Yes

# LED FLUSH MOUNT



CEC T-24 JA8-2016-E 100%-10%  
UL file#E483573

## Double-ring Series(Round)

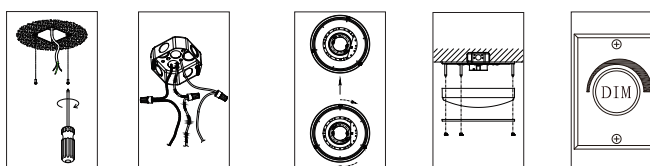


### Features

- All the products certificated by UL/cUL, Energy Star etc.
- Driver on Board LED light Engines
- 120V input, 50/60Hz
- PF>0.9
- Damp Location
- CRI 80 or 90 optional
- Ambient temperature:-20°C to 45°C
- Triac dimming of 100%-10%
- 5 years or 50,000 hour non-prorated warranty

### Benefits

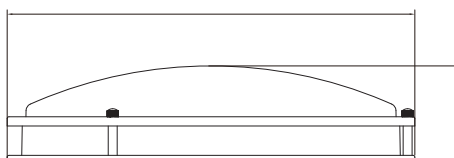
- Ideal replacement for traditional fixtures
- NO UV or IR radiation
- Low flicker and noise free
- No bulb replacement required



### Product Dimension

Optional Size:

- 10", 12", 14"
- 16", 18", 24"



### Product Specification

Model Number	Wattage	Lumen	Diameter	Height	CCT	CRI	Dimmable
ECO-WOR-CEDC10G3015DOB	15W	1050	10"	3.4"	2700K-5000K	80/90	Yes
ECO-WOR-CEDC12G3015DOB	15W	1050	12"	3.4"	2700K-5000K	80/90	Yes
ECO-WOR-CEDC14G3015DOB	15W	1050	14"	3.9"	2700K-5000K	80/90	Yes
ECO-WOR-CEDC14G3025DOB	25W	1750	14"	3.9"	2700K-5000K	80/90	Yes
ECO-WOR-CEDC16G3030DOB	30W	2250	16"	4.0"	2700K-5000K	80/90	Yes
ECO-WOR-CE00DC18DRIVER	30W	2100	18"	4.2"	2700K-5000K	80/90	Yes
ECO-WOR-CE00DC24DRIVER	40W	2800	24"	4.2"	2700K-5000K	80/90	Yes

# LED FLUSH MOUNT

Double-ring Series (Oval)

**FCIC**     
 CEC T-24 JA8-2016-E 100%-10%  
 UL file#E483573

( 3CCT Optional )

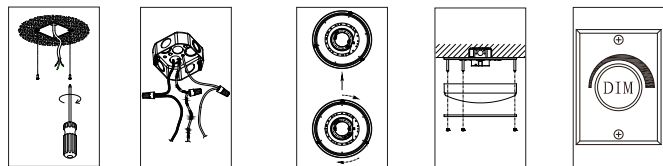


## Features

- All the products certificated by UL/cUL, Energy Star etc.
- Isolated driver
- 120V input, 50/60Hz
- PF>0.9
- Damp Location
- CRI 80 or 90 optional
- Ambient temperature:-20°C to 45°C
- Triac dimming of 100%-10%
- 5 years or 50,000 hour non-prorated warranty

## Benefits

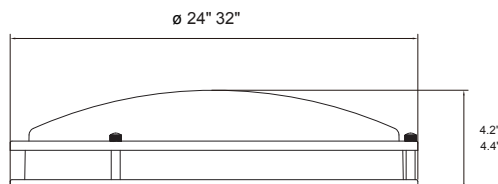
- Ideal replacement for traditional fixtures
- NO UV or IR radiation
- Low flicker and noise free
- No bulb replacement required



## Product Dimension

Optional Size:

24",32"



## Product Specification

Model Number	Wattage	Lumen	Diameter	Height	CCT	CRI	Dimmable
ECO-WOR-CE00DC24DRIVER	32W	2240	24"	4.2"	2700K-5000K	80/90	Yes
ECO-WOR-CE00DC32WPDR	42W	2940	32"	4.4"	2700K-5000K	80/90	Yes

# LED FLUSH MOUNT




  
 CEC T-24 JA8-2016-E 100%-10%  
 UL file#E483573

## Over-sizes Series

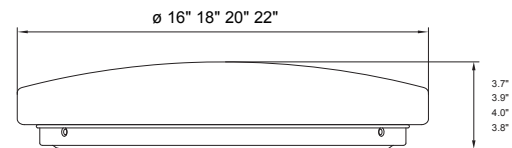
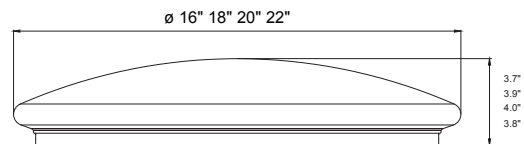
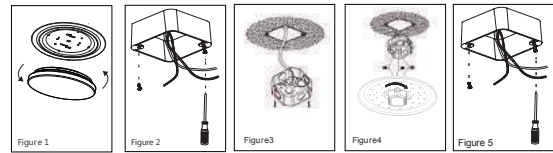


### Features

- UL/cUL , FCC , IC listed
- Energy Star® rated
- Damp location listed
- Wall or Ceiling Mount
- Opaque acrylic diffuser
- Multiple LED array for uniform illumination
- Isolated driver.
- 120V Input, 50/60Hz
- PF>0.9
- CRI 80 or 90 optional
- Available in wide range of color temperature from 2700K-5000K
- Ambient temperature: -20°C to 45°C
- 5 years or 50,000 hour non-prorated warranty
- Smooth TRIAC dimming feature and compatible with a wide variety of dimmers 100% - 10%

### Benefits

- Ideal replacement for traditional incandescent surface mount fixture
- Good light quality
- Provide high efficient and uniform lighting
- NO UV or IR radiation
- Low flicker and noise free
- No bulb replacement is required



## Product Specification

Model Number	Wattage	Lumen	Diameter	Height	CCT	CRI	Dimmable
ECO-WOR-CE00CY16SG-30-U	26W	1820	16"	3.7"	2700K-5000K	80/90	Yes
ECO-WOR-CE00CY18SG-30-U	30W	2100	18"	3.9"	2700K-5000K	80/90	Yes
ECO-WOR-CE00CY20SG-30-U	35W	2450	20"	4.0"	2700K-5000K	80/90	Yes
ECO-WOR-CE00CY22SG-30-U	40W	2800	22"	3.8"	2700K-5000K	80/90	Yes



# LED FLUSH MOUNT

## Square Series




  
 CEC T-24 JA8-2016-E 100%-10%  
 UL file#E483573



JBF 11" & 14"



MBF 11" & 14"



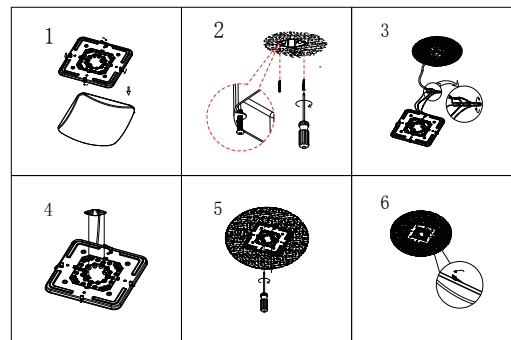
MBG 11" & 14"

## Features

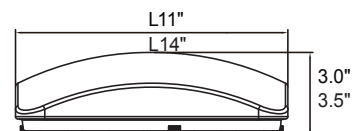
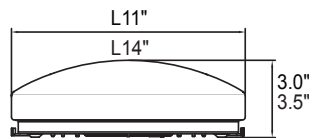
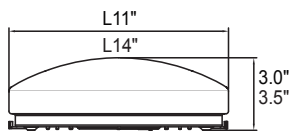
- All the products certificated by UL/cUL, Energy Star etc.
- Driver on Board LED light Engines
- 120V input, 50/60Hz
- PF>0.9
- Damp Location
- CRI 80 or 90 optional
- Ambient temperature:-20°C to 45°C
- Triac dimming of 100%-10%
- 5 years or 50,000 non-prorated warranty

## Benefits

- Ideal replacement for traditional fixtures
- NO UV or IR radiation
- Low flicker and noise free
- No bulb replacement required



## Product Dimension



## Product Specification

Model Number	Wattage	Lumen	Diameter	Height	CCT	CRI	Dimmable
ECO-WOR-CE00CF11DOBIML- JBF	15W	1125	11"	3.0"	2700K-5000K	80/90	Yes
ECO-WOR-CE00CF14DOBIML- JBF	24W	1680	14"	3.5"	2700K-5000K	80/90	Yes
ECO-WOR-CE00CF11DOBIML- MBF	15W	1125	11"	3.0"	2700K-5000K	80/90	Yes
ECO-WOR-CE00CF14DOBIML- MBF	24W	1680	14"	3.5"	2700K-5000K	80/90	Yes
ECO-WOR-CE00CF11DOBIML- MBG	15W	1125	11"	3.0"	2700K-5000K	80/90	Yes
ECO-WOR-CE00CF14DOBIML- MBG	24W	1680	14"	3.5"	2700K-5000K	80/90	Yes

# LED FLUSH MOUNT

**FCIC** ENERGY STAR LISTED DIM  
 CEC T-24 JA8-2016-E 100%-10%  
 UL file#E483573

## Glass Series



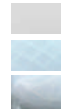
A- Clouds



B- Check Patten



C-Frosted

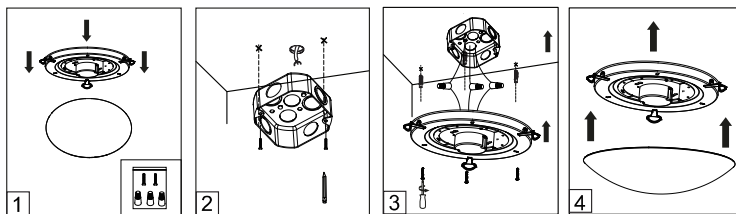
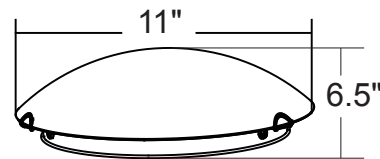


## Features

- All the products certificated by UL/cUL, Energy Star etc.
- Driver on Board LED light Engines
- 120V input, 50/60Hz
- PF>0.9
- Damp Location
- CRI 80 or 90 optional
- Ambient temperature:-20°C to 45°C
- Triac dimming of 100%-10%
- 5 years or 50,000 hour non-prorated warranty

## Benefits

- Ideal replacement for traditional fixtures
- NO UV or IR radiation
- Low flicker and noise free
- No bulb replacement required



## Product Specification

Model Number	Wattage	Lumen	Diameter	Height	CCT	CRI	Dimmable
ECO-WOR-CECY11CPG3018DOB-A 15W	15W	1125	ø11"	6.5"	2700K-5000K	80/90	Yes
ECO-WOR-CECY11CPG3018DOB-B 15W	15W	1125	ø11"	6.5"	2700K-5000K	80/90	Yes
ECO-WOR-CECY11CPG3018DOB-C 15W	15W	1125	ø11"	6.5"	2700K-5000K	80/90	Yes

# LED FLUSH MOUNT




  
 CEC T-24 JA8-2016-E 100%-10%  
 UL file#E483573

## Glass Series

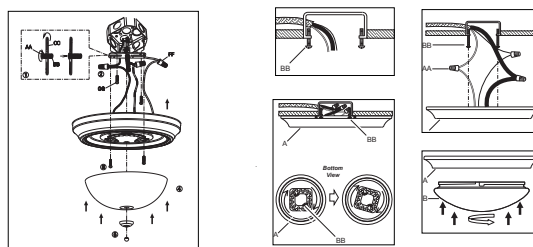


## Features

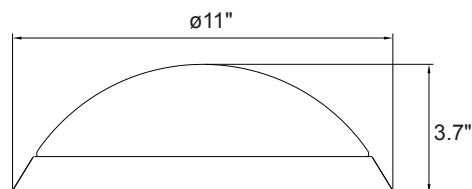
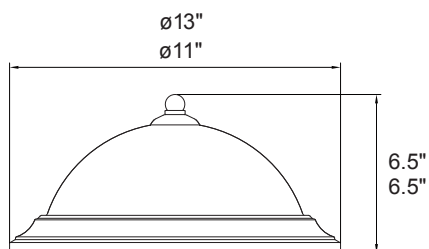
- All the products certificated by UL/cUL, Energy Star etc.
- Driver on Board LED light Engines
- 120V input, 50/60Hz
- PF>0.9
- Damp Location
- CRI 80 or 90 optional
- Ambient temperature:-20°C to 45°C
- Triac dimming of 100%-10%
- 5 years or 50,000 hour non-prorated warranty

## Benefits

- Ideal replacement for traditional fixtures
- NO UV or IR radiation
- Low flicker and noise free
- No bulb replacement required



## Product Dimension(inch)



## Product Specification

Model Number	Wattage	Lumen	Diameter	Height	CCT	CRI	Dimmable
ECO-WOR-CECY11HBG3018DOB	15W	1125	11"	3.7"	2700K-5000K	80/90	Yes
ECO-WOR-CECY11CTG3018DOB	15W	1125	11"	6.5"	2700K-5000K	80/90	Yes
ECO-WOR-CECY13CTG3018DOB	20W	1400	13"	6.5"	2700K-5000K	80/90	Yes

# LED SLIM PANEL LIGHT

NEW




  
 CEC T-24 JA8-2016-E 100%-10%  
 UL file#E483573

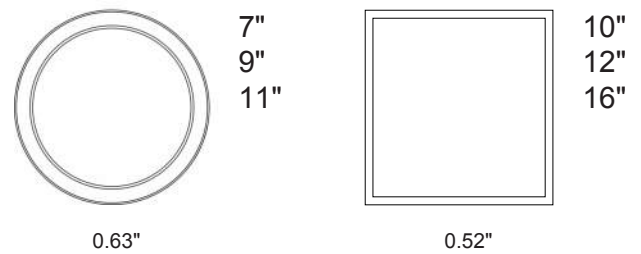
• 3CCT Adjustable



## Features

- All the products certificated by UL, CUL, Energy Star etc.
- Driver build in.
- 120V input, 50/60Hz
- PF>0.9
- CRI 80 or 90 optional
- Ambient temperature: -20°C to 45°C
- Triac dimming of 100%-10%
- 5 years or 50,000 hour non-prorated warranty
- Color temperature tunable 3000K/4000K/5000K

## Product Dimension



## Benefits

- Ideal replacement for traditional fixtures
- NO UV or IR radiation
- Low flicker and noise free
- No bulb replacement required

## Product Specification

Model Number	Wattage	Lumen	Diameter	Height	CRI	Dimmable
ECO-WOR-PL07KD412W(CCT)	12W	840	7"	0.63"	80/90	Yes
ECO-WOR-PL09KD415W(CCT)	15W	1100	9"	0.63"	80/90	Yes
ECO-WOR-PL12KD420W(CCT)	20W	1400	11"	0.63"	80/90	Yes
ECO-WOR-PLS10-12W(CCT)	12W	840	10"	0.52"	80/90	Yes
ECO-WOR-PLS12-15W(CCT)	15W	1050	12"	0.52"	80/90	Yes
ECO-WOR-PLS14-20W(CCT)	20W	1400	16"	0.52"	80/90	Yes

# LED SLIM PANEL LIGHT

HOT

**FCIC**     
 CEC T-24 JA8-2016-E 100%-10%  
 UL file#E483573

UL SERIES • Wet Rated



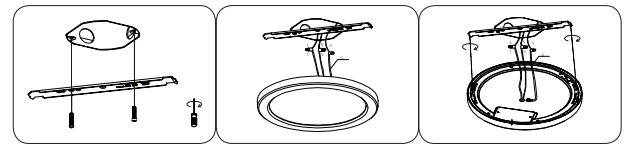
White  
 BN  
 ORB

## Features

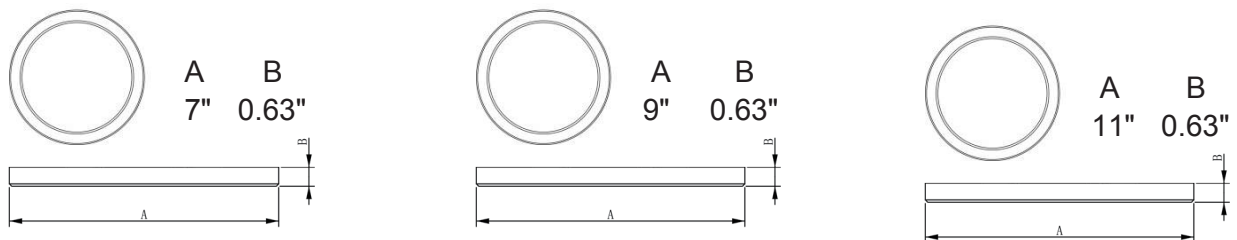
- All the products certificated by UL, CUL, Energy Star etc.
- Driver build in.
- 120V input, 50/60Hz
- PF>0.9
- CRI 80 or 90 optional
- Ambient temperature: -20°C to 45°C
- Triac dimming of 100%-10%
- 5 years or 50,000 non-prorated warranty

## Benefits

- Ideal replacement for traditional fixtures
- NO UV or IR radiation
- Low flicker and noise free
- No bulb replacement required



## Product Dimension



## Product Specification

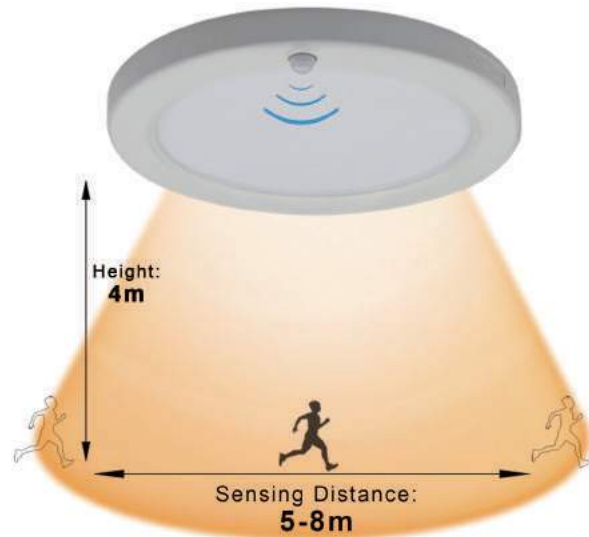
Model Number	Wattage	Lumen	Diameter	Height	CCT	CRI	Dimmable
ECO-WOR-PL07KD412W	12W	840	7"	0.63"	2700K-4000K	80/90	Yes
ECO-WOR-PL09KD415W	15W	1100	9"	0.63"	2700K-4000K	80/90	Yes
ECO-WOR-PL12KD420W	20W	1400	11"	0.63"	2700K-4000K	80/90	Yes

# LED PIR LIGHT



  
 CEC T-24 JA8-2016-E  
 UL file#E483573

## Sensor



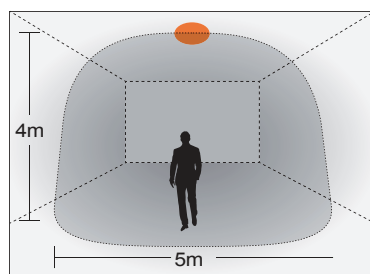
## Features

- UL/cUL, FCC, IC listed
- Energy Star® rated
- Damp location listed
- Wall or Ceiling Mount
- Opaque acrylic diffuser
- Multiple LED array for uniform illumination
- Driver build in.
- Fixture Material: Plastic
- 120V Input, 50/60Hz
- PF>0.9
- CRI 80 or 90 optional
- Flicker<30% (≤120HZ)
- Ambient temperature: -20°C to 45°C
- 5 year 50,000 hour non-prorated warranty

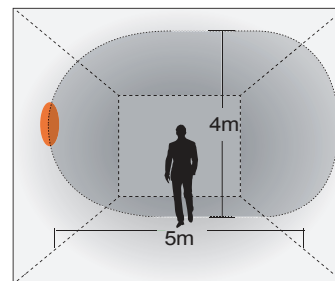
## PIR Sensor Mode

- option 1. Only ON/OFF
- option 2. The light brightness gradually increases to 100% (20S) when turn on and gradually decreases to 0% when turn off.
- option 3. The light keeps at 30% brightness when people walk out of detective area.

## Detection Pattern



ceiling mounting pattern (m)



wall mounting pattern (m)

## Product Specification

Model Number	Wattage	Lumen	Diameter	Height	CCT	CRI
ECO-WOR-PL07PGPIR412W	12W	840	7.02"	2"	2700K-5000K	80/90

# LED SLIM PANEL LIGHT




  
 CEC T-24 JA8-2016-E 100%-10%

## ETL SERIES

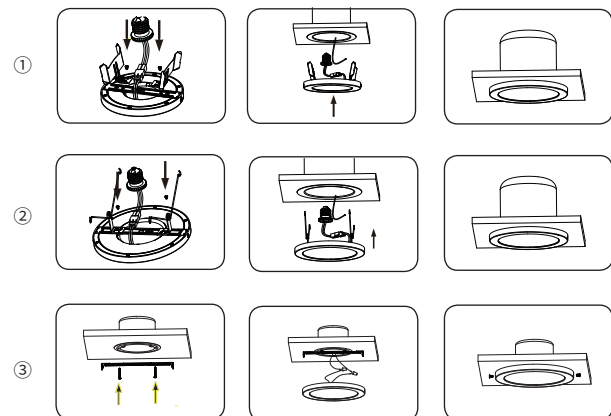


## Features

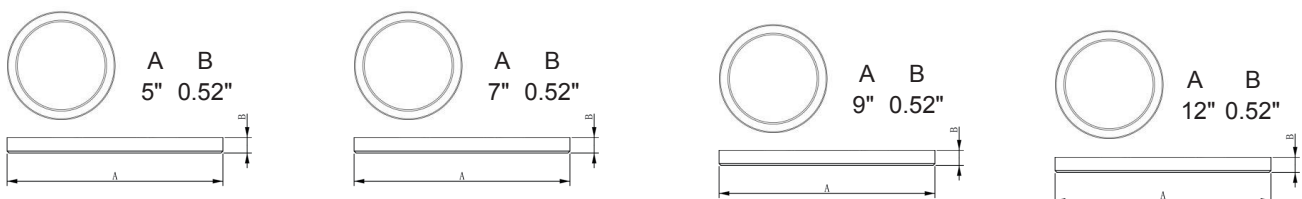
- All the products certificated by ETL/cETL etc.
- Driver build in.
- 120V input, 50/60Hz
- PF>0.9
- Damp Location
- CRI 80 or 90 optional
- Ambient temperature:-20°C to 45°C
- Triac dimming of 100%-10%
- 3 years or 25,000 hour non-prorated warranty

## Benefits

- Ideal replacement for traditional fixtures
- NO UV or IR radiation
- Low flicker and noise free
- No bulb replacement required



## Product Dimension



## Product Specification

Model Number	Wattage	Lumen	Diameter	Height	CCT	CRI	Dimmable
ECO-WOR-PLR5-6W	6W	400	5"	0.52"	3000K-6000K	80/90	Yes
ECO-WOR-PLR7-12W	12W	800	7"	0.52"	3000K-6000K	80/90	Yes
ECO-WOR-PLR9-18W	18W	1260	9"	0.52"	3000K-6000K	80/90	Yes
ECO-WOR-PLR12-24W	24W	1680	12"	0.52"	3000K-6000K	80/90	Yes

# LED PANEL LIGHT



## Trim-replaceable

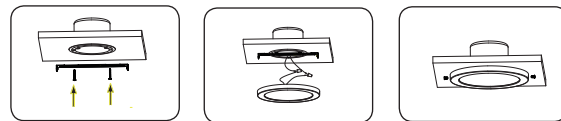


### Features

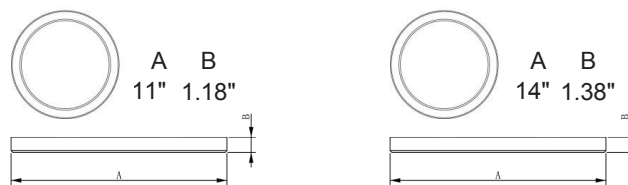
- All the products certificated by ETL/cETL, Energy Star etc.
- Driver build in.
- 120V input, 50/60Hz
- PF>0.9
- Damp Location
- CRI 80 or 90 optional
- Ambient temperature:-20°C to 45°C
- Triac dimming of 100%-10%
- 5 years or 50,000 hour non-prorated non-prorated warranty

### Benefits

- Ideal replacement for traditional fixtures
- NO UV or IR radiation
- Low flicker and noise free
- No bulb replacement required



### Product Dimension



### Product Specification

Model Number	Wattage	Lumen	Diameter	Height	CCT	CRI	Dimmable
ECO-WOR-PLR7-18W	18W	1260	11"	1.18"	3000K-6000K	80/90	Yes
ECO-WOR-PLR12-24W	24W	1680	14"	1.38"	3000K-6000K	80/90	Yes



# LED SLIM PANEL LIGHT

## ETL SERIES



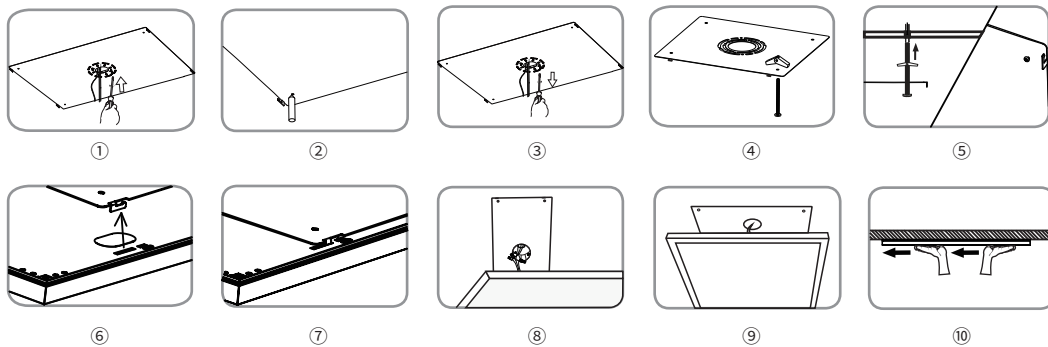
### Features

- All the products certificated by ETL/cETL etc.
- Driver build in.
- 120V input, 50/60Hz
- PF>0.9
- Damp Location
- CRI 80 or 90 optional
- Ambient temperature:-20°C to 45°C
- Triac dimming of 100%-10%
- 5 years or 50,000 hour non-prorated warranty

### Benefits

- Ideal replacement for traditional fixtures
- NO UV or IR radiation
- Low flicker and noise free
- No bulb replacement required
- Easy installation, low installation costs

### Product Installation



### Product Specification

Model Number	Wattage	Lumen	Diameter	Height	CCT	CRI	Dimmable
ECO-WOR-PLS10-12W	12W	840	10"	0.52"	3000K-6000K	80/90	Yes
ECO-WOR-PLS12-15W	15W	1050	12"	0.52"	3000K-6000K	80/90	Yes
ECO-WOR-PLS14-20W	20W	1400	16"	0.52"	3000K-6000K	80/90	Yes

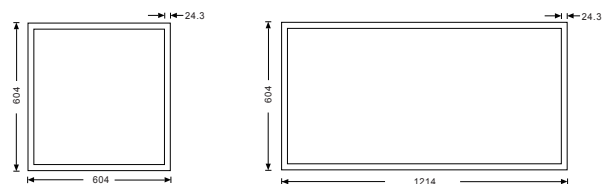
# LED PANEL LIGHT (US series)



**Driver Built-in**

## Features

- UL/cUL, DLC4.2 certified
- Standard and Premium Optional
- 0-10V Dimmable
- Wide Range of Voltage, AC100-277V
- Seamless Frame
- PMMA Light Guide Plate
- 5 Years or 50,000 hour non-prorated Warranty



## Product Installation



## Product Specification

Model Number	Dimensions	Power	Standard	Premium	Voltafe	CRI	Dimmable
ECO-WOR-DIPL3030	1*1FT	10W/16W	100lm/w	125lm/w	100-277V	80	Yes
ECO-WOR- DIPL3060	1*2FT	18W/25W	100lm/w	125lm/w	100-277V	80	Yes
ECO-WOR-DIPL30120	1*4FT	32W	100lm/w	125lm/w	100-277V	80	Yes
ECO-WOR-DIPL6060	2*2FT	32W	100lm/w	125lm/w	100-277V	80	Yes
ECO-WOR-DIPL60120	2*4FT	38W/48W	100lm/w	125lm/w	100-277V	80	Yes

# LED PANEL LIGHT (US series)

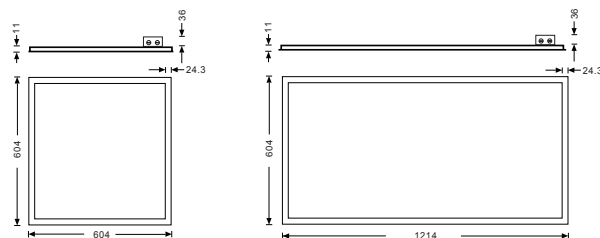


UL file#E492815



## Features

- UL/cUL, DLC4.2 certified
- Standard and Premium Optional
- 0-10V Dimmable
- Wide Range of Voltage, AC100-277V
- Seamless Frame
- PMMA Light Guide Plate
- 5 Years or 50,000 hour non-prorated Warranty



## Product Installation



## Product Specification

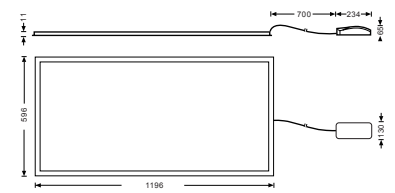
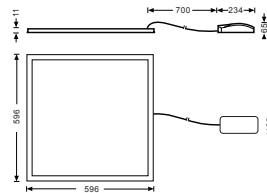
Model Number	Dimensions	Power	Standard	Premium	Voltage	CRI	Dimmable
ECO-WOR-PL14-36W	1*4FT	36W	100lm/w	130lm/w	100-277V	80	Yes
ECO-WOR-PL22-30W	2*2FT	30W	100lm/w	130lm/w	100-277V	80	Yes
ECO-WOR-PL22-36W	2*2FT	36W	100lm/w	130lm/w	100-277V	80	Yes
ECO-WOR-PL22-40W	2*2FT	40W	100lm/w	130lm/w	100-277V	80	Yes
ECO-WOR-PL24-40W	2*4FT	40W	100lm/w	130lm/w	100-277V	80	Yes
ECO-WOR-PL24-50W	2*4FT	50W	100lm/w	130lm/w	100-277V	80	Yes
ECO-WOR-PL24-60W	2*4FT	60W	100lm/w	130lm/w	100-277V	80	Yes

# LED PANEL LIGHT (EU series)



## Features

- TUV/CE,LVD,EMC certified
- Standard and Premium Optional
- Wide Range of Voltage, AC100-240V
- Seamless Frame
- PMMA Light Guide Plate
- 5 Years or 50,000 hour non-prorated warranty



## Product Installation



## Product Specification

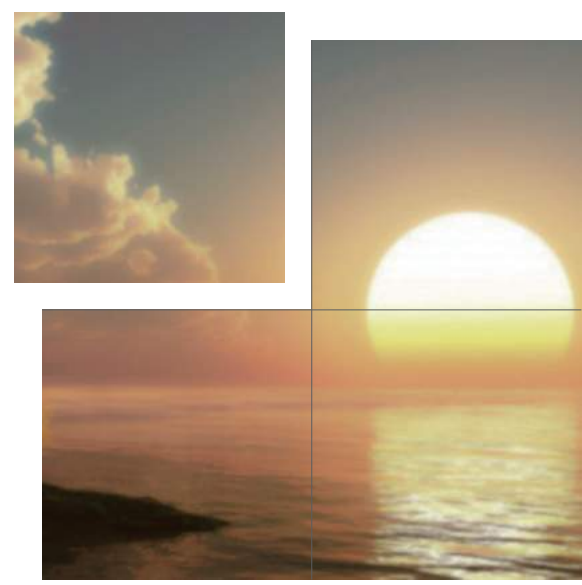
Model Number	Dimensions	Power	Standard	Premium	Voltage	CRI	Dimmable
ECO-WOR-PXW-0312-36	296*1196mm	36W	100lm/w	120lm/w	100-240V	80	No
ECO-WOR-PXW-0606-36	596*596mm	36W	100lm/w	120lm/w	100-240V	80	No
ECO-WOR-PXW-0606-40	596*596mm	40W	100lm/w	120lm/w	100-240V	80	No
ECO-WOR-PXW-0612-50	596*1196mm	50W	100lm/w	120lm/w	100-240V	80	No
ECO-WOR-PXW-0612-60	596*1196mm	60W	100lm/w	120lm/w	100-240V	80	No

# LED PANEL LIGHT

## Smart Panel light (Frameless)



White-A



Customized Image and Seamless Connection

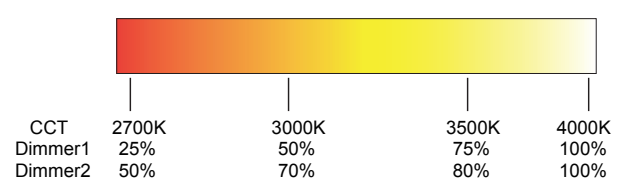
### Features

- All the products certificated by UL/cUL, Energy Star etc.
- Isolated driver
- 120V input, 50/60Hz
- PF>0.9
- Damp Location
- CRI 80 or 90 optional
- Ambient temperature:-20°C to 45°C
- Triac dimming of 100%-10%
- 5 Year or 50,000 hour non-prorated warranty

### Benefits

- Customized image
- Splicable designing
- Frameless structure
- Low flicker and noise free
- No bulb replacement required

### Warm Dimming Sample



### Product Specification

Model Number	Wattage	Standard	Dimensions	Height	CCT	CRI	Dimmable
ECO-WOR-FL0303-10-A	10W	100lm/w	1*1FT	0.9"	3000K-6000K	80/90	Yes
ECO-WOR-FL0306-15-B	15W	100lm/w	1*2FT	0.9"	3000K-6000K	80/90	Yes
ECO-WOR-FL0312-30-C	30W	100lm/w	2*2FT	0.9"	3000K-6000K	80/90	Yes
ECO-WOR-FL0606-36-D	36W	100lm/w	1*4FT	0.9"	3000K-6000K	80/90	Yes
ECO-WOR-FL0612-48-A~D	48W	100lm/w	2*4FT	0.9"	3000K-6000K	80/90	Yes

# LED DISK LIGHT CCT TUNABLE LED LIGHT ENGINE

**FCIC** ENERGY STAR LISTED DIM  
 CEC T-24 JA8-2016-E 100%-10%  
 UL file#E483573

• Wet Rated



- White
- ORB
- BN

## Product Dimension



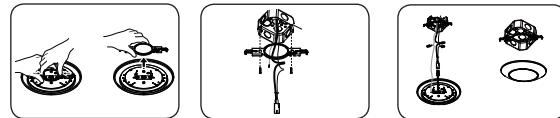
## Features

- All the products certificated by UL/cUL, Energy Star etc.
- Driver on Board LED light Engines
- 120V input, 50/60Hz
- PF>0.9
- Damp Location
- CRI 80 or 90 optional
- Ambient temperature:-20°C to 45°C
- Triac dimming of 100%-10%
- 5 Years or 50,000 hour non-prorated warranty

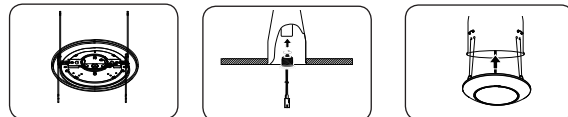
## Benefits

- Ideal replacement for traditional fixtures
- Two kinds of installation mode
- NO UV or IR radiation
- Low flicker and noise free
- No bulb replacement required

### Surface mount



### Recessed



## Product Specification

Model Number	Wattage	Lumen	Diameter	CCT	CRI	Dimmable
ECO-WOR-DL40CYFe411W	11W	680	4"	2700K-5000K	80/90	Yes
ECO-WOR-DL60CYFe413W	13W	840	7.3"	2700K-5000K	80/90	Yes

# LED DISK LIGHT

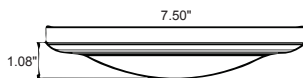



  
 CEC T-24 JA8-2016-E 100%-10%

-  White
-  Bronze
-  Silver



## Product Dimension



## Benefits

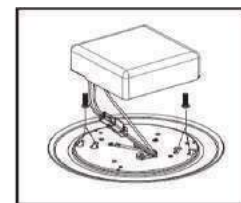
- Ideal replacement for traditional fixtures
- NO UV or IR radiation
- Low flicker and noise free
- No bulb replacement required

## Features

- All the products certificated by ETL/cETL Energy Star etc.
- Driver on Board LED light Engines
- 120V input, 50/60Hz
- PF>0.9
- Damp Location
- CRI 80 or 90 optional
- Ambient temperature:-20°C to 45°C
- Triac dimming of 100%-10%
- 5 Years or 50,000 hour non-prorated warranty



1. Wire the connector to house wiring and attach to fixture



2. Attach fixture into J-Box with the screws provided

## Product Specification

Model Number	Wattage	Lumen	Diameter	Height	CCT	CRI	Dimmable
ECO-WOR-DL6GFO-15W	15W	1050	7.5"	1.08"	2700K-5000K	80/90	Yes

# LED RETROFIT DOWNLIGHT





  
 CEC T-24 JA8-2016-E 100%-10%  
 UL file#E488637



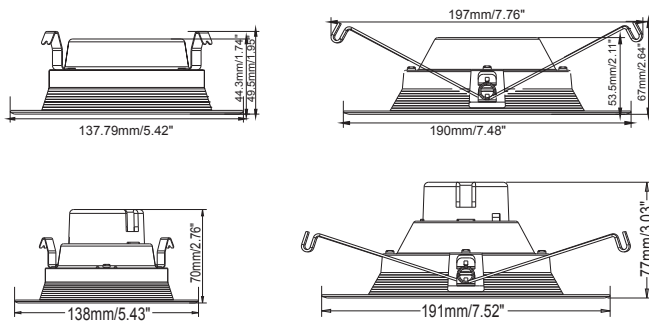
## Features

- All the products certificated by UL/cUL, Energy Star etc.
- 120V input, 50/60Hz
- PF>0.9
- Wet Location And Damp Location
- CRI 80 or 90 optional
- Ambient temperature:-20°C to 45°C
- Triac dimming of 100%-10%
- 5 Years or 50,000 hour non-prorated warranty

## Benefits

- Ideal replacement for traditional fixtures
- NO UV or IR radiation
- Low flicker and noise free
- No bulb replacement required

## Product Dimension



## Product Specification

Model Number	Wattage	Lumen	Diameter	Height	CCT	CRI	Dimmable
ECO-WOR-DL4DWP-10W	10W	650	5.42"	1.74"	2700K-6000K	80	Yes
ECO-WOR-DL4DWP-13W	13W	850	5.42"	1.74"	2700K-6000K	80	Yes
ECO-WOR-DL6DWP-11W	11W	750	7.48"	2.11"	2700K-6000K	80	Yes
ECO-WOR-DL6DWP-13W	13W	900	7.48"	2.11"	2700K-6000K	80	Yes
ECO-WOR-DL6DWP-18W	18W	1200	7.48"	2.11"	2700K-6000K	80	Yes
ECO-WOR-DL4DGWP-10W	10W	700	5.43"	2.76"	2700K-6000K	90	Yes
ECO-WOR-DL4DGWP-13W	13W	910	5.43"	2.76"	2700K-6000K	90	Yes
ECO-WOR-DL6DGWP-12W	12W	840	7.52"	3.03"	2700K-6000K	90	Yes
ECO-WOR-DL6DGWP-15W	15W	1050	7.52"	3.03"	2700K-6000K	90	Yes
ECO-WOR-DL6DGWP-18W	18W	1260	7.52"	3.03"	2700K-6000K	90	Yes

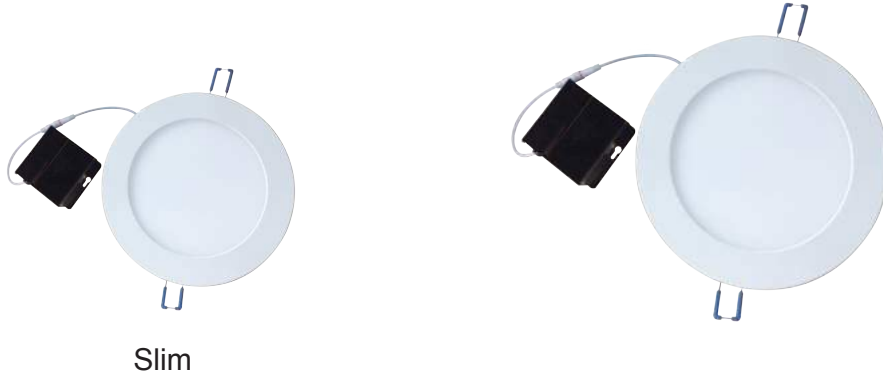


# LED RETROFIT DOWNLIGHT





  
 CEC T-24 JA8-2016-E 100%-10%  
 UL file#E488637



Slim

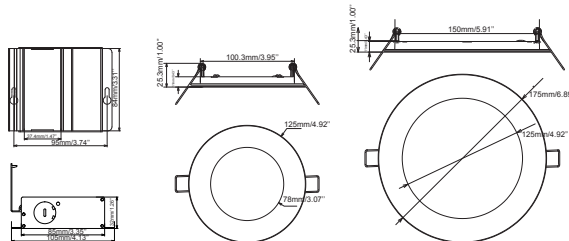
## Features

- All the products certificated by UL/cUL, Energy Star etc.
- 120V input, 50/60Hz
- PF>0.9
- Wet Location And Damp Location
- CRI 80 or 90 optional
- Ambient temperature:-20°C to 45°C
- Triac dimming of 100%-10%
- 5 years limited warranty

## Benefits

- Ideal replacement for traditional fixtures
- NO UV or IR radiation
- Low flicker and noise free
- No bulb replacement required

## Product Dimension



## Product Specification

Model Number	Wattage	Lumen	Diameter	Height	CCT	CRI	Dimmable
ECO-WOR-DL4DUT-10W	10W	650	4.92"	1.0"	2700K-6000K	80	Yes
ECO-WOR-DL6DUT-14W	14W	850	6.89"	1.0"	2700K-6000K	80	Yes
ECO-WOR-DL4DGUT-12W	12W	700	4.92"	1.0"	2700K-6000K	90	Yes
ECO-WOR-DL6DGUT-15W	15W	900	6.89"	1.0"	2700K-6000K	90	Yes

# LED LIGHT ENGINE

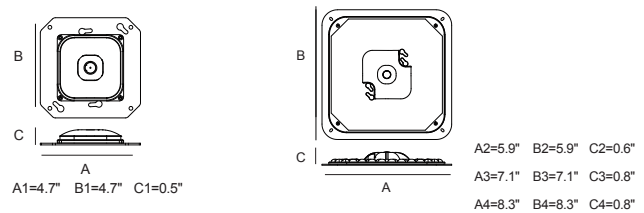
## AC Square Module



### Features

- Driver On Board design, optimized design, more stable than normal driver.
- Certified complete, passed UL1598C/UL1598/UL8750.
- 8-32W can be individually adapted to 6"-16" Ceiling light. Wall sconce and other lights. Can be jointed, the combination also can be installed in a larger size of the lights.
- Retrofit or install, easy to operate, can be replaced in 5 minutes.
- Unique optics design, transmittance up to 98%, beam angle up to 160°
- Automated production, 2-3 weeks lead time.
- Meet the certificates of Energy Star 2.0 & CEC Title 24.
- Smooth TRIAC dimming feature and compatible with a wide variety of dimmers 100%-10%
- 5 Year or 50,000 hour non-prorated warranty
- Low flicker and noise free

### Product Dimension



### Product Specification

Model Number	Wattage	Lumen	Diameter	Height	CCT	CRI	Dimmable
ECO-WOR-LLETBBG3A08	8W	800	4.70"x4.70"	0.5"	2700K-6000K	80/90	Yes
ECO-WOR-LLETBBG3A10	10W	1000	4.70"x4.70"	0.5"	2700K-6000K	80/90	Yes
ECO-WOR-LLETBBG3A12	12W	1200	4.70"x4.70"	0.5"	2700K-6000K	80/90	Yes
ECO-WOR-LLETBBG3A15	15W	1500	5.90"x5.90"	0.6"	2700K-6000K	80/90	Yes
ECO-WOR-LLETBBG3A20	20W	2000	7.10"x7.10"	0.6"	2700K-6000K	80/90	Yes
ECO-WOR-LLETBBG3A25	25W	2500	7.10"x7.10"	0.6"	2700K-6000K	80/90	Yes
ECO-WOR-LLETBBG3A30	30W	3000	8.30"x8.30"	0.8"	2700K-6000K	80/90	Yes

# LED LIGHT ENGINE

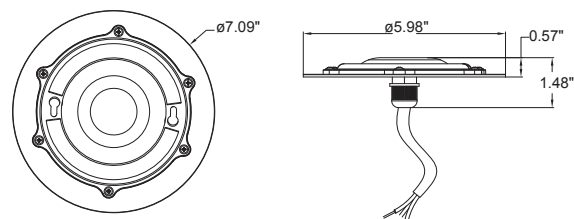
**WET LOCATION  
IP65**



## Features

- Driver On Board design
- All the products certificated by UL, CUL, Energy Star etc.
- Wet Location IP65, outdoor using
- Retrofit or install, easy to operate, can be replaced in 5 minutes.
- Low flicker and noise free
- Automated production, 2-3 weeks lead time.
- Smooth TRIAC dimming feature and compatible with a wide variety of dimmers 100%-10%
- 5 Year or 50,000 hour non-prorated warranty

## Product Dimension



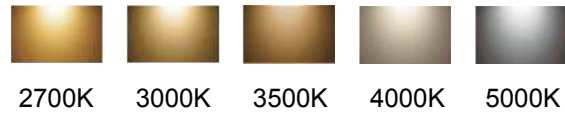
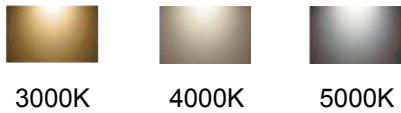
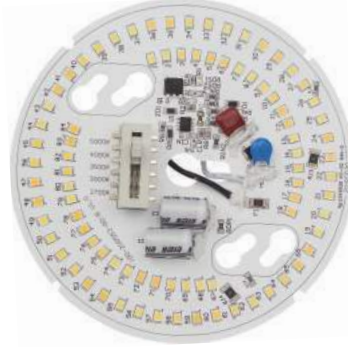
## Product Specification

Model Number	Wattage	Lumen	Diameter	Height	CCT	CRI	Dimmable
ECO-WOR-CE00MD05S10IPDOB	10W	850	ø5"	0.8"	2700K-6000K	80/90	Yes
ECO-WOR-CE00MD06S15IPDOB	15W	1300	ø6"	0.8"	2700K-6000K	80/90	Yes
ECO-WOR-CE00MD07S25IPDOB	25W	2150	ø6"	0.8"	2700K-6000K	80/90	Yes
ECO-WOR-CE00MD08S30IPDOB	30W	2550	ø7"	0.8"	2700K-6000K	80/90	Yes

# LED LIGHT ENGINE

**FCIC** ENERGY STAR **UL LISTED**  
 CEC T-24 JA8-2016-E  
 UL file#E483573

3CCT/5CCT Adjustable



## Features

- All the products certificated by UL/cUL, Energy Star etc.
- Driver on Board LED light Engines
- 120V input, 50/60Hz
- PF>0.9
- Damp Location
- CRI 80 or 90 optional
- Multiple LED array for uniform illumination
- Available in wide range of color temperature from 2700K-5000K
- Ambient temperature:-20°C to 45°C
- Triac dimming of 100%-10%
- 5 Years or 50,000 hour non-prorated warranty

## Benefits

- Ideal replacement for traditional fixtures
- NO UV or IR radiation
- Low flicker and noise free
- No bulb replacement required

## Product Specification

Model Number	Wattage	Lumen	Diameter	Height	CCT	CRI	Dimmable
ECO-WOR-LLER06CTAPP	15W	1275	4.70"	0.3"	2700K-6000K	80/90	Yes
ECO-WOR-LLER09CTAPP	25W	2125	7.40"	0.3"	2700K-6000K	80/90	Yes